

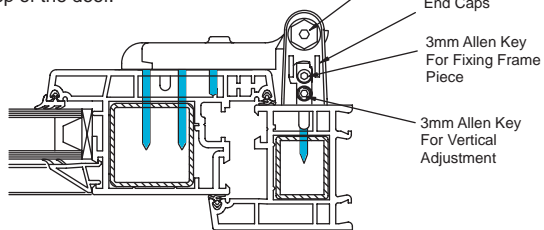
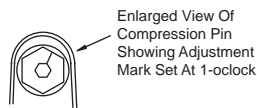
## Please Note :

All allen keys provided in each box.  
The hinge should be fixed into re-inforcing on sash and frame.

- 1). Set the sash/frame to the required cover/overlap, position the jig over the sections and drill :  
4 x 5.5mm Holes  
9 x 3.0mm Holes

2. Select the required packer configuration and place under the frame fixing plate. The packers are clearly marked, TOP should be positioned towards the top of the door. Attach frame fixing plate to the frame locating into the 5.5mm pre-drilled holes. Fix using 3 x 4.3mm screws of the appropriate length to fix into the re-inforcing.

- 3). Place the frame piece over the frame fixing plate and fix using a 3mm allen key. Make sure that the compression pin enters from the top of the door.



- 4). Attach the sash piece into the 5.5mm pre-drilled holes on the opening leaf and fix using 6 x 4.3mm screws of the appropriate length for the section used. The 4 screws furthest away from the frame should be fixed into re-inforcing. The 2 screws nearest the frame will usually be smaller as not to enter the eurogroove area.

- 5). Push the compression pin through the frame and sash piece to assemble the hinge. Set the compression pin to 1 o'clock for centre compression setting. The Compression Pin should always be at the TOP of the hinge.

## Adjustment.

- 6). Check the cover/overlap and compression settings.

**Horizontal Adjustment** - Release sash plate (half a turn will suffice) with a 3.0mm allen key. With a 4.0mm allen key turn the horizontal adjustment screw until the correct adjustment is achieved. Re-fix sash plate (do not over tighten).

**Adjustment +10mm, -4.0mm**

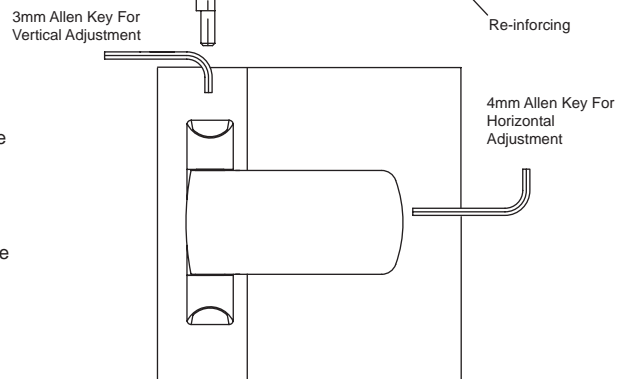
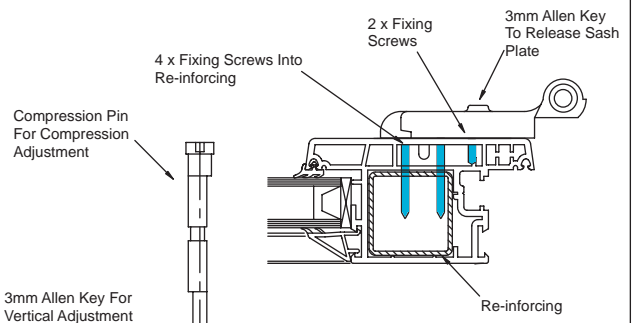
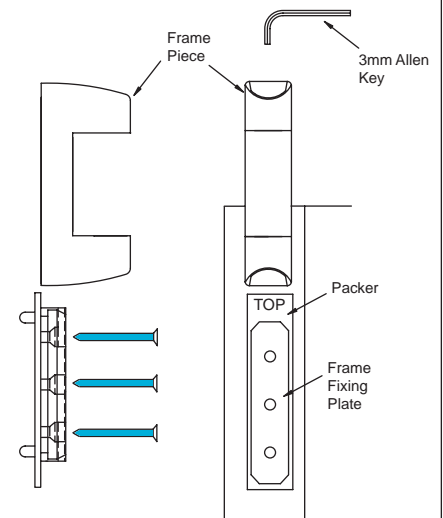
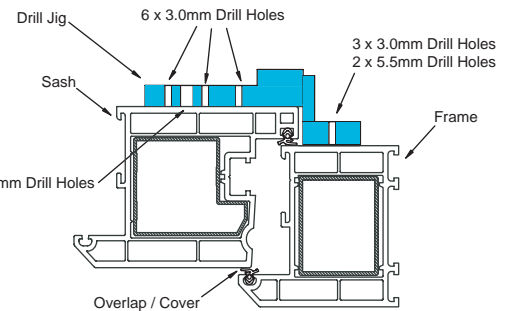
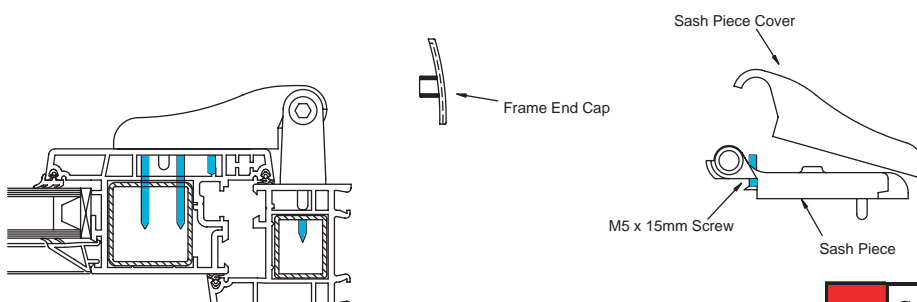
**Vertical Adjustment** - Using a 3.0mm allen key unfix the frame piece from the frame fixing plate (do not disengage pieces). Using the 3.0mm allen key turn the height adjustment screw clockwise to adjust vertically upwards and anti-clockwise to adjust vertically downwards until correct adjustment is achieved. Re-fix the frame piece and frame fixing plate

**Adjustment +3.0mm, -1.0mm**

**Compression Adjustment** - Lift the compression pin so that it can be rotated. Using a 4.0mm allen key turn the compression pin clockwise or anti-clockwise to increase or reduce compression. When correct compression is achieved fix the pin using a 3.0mm allen key.

**Adjustment +1.5mm, -1.5mm**

- 7). Fix the sash piece cover using the M5 x 15mm screw provided and push the frame end caps into the slots provided..



Manual Page Reference :-

S1 - 55-56

FD6

Issue	Description	Drawn	Chkd	Date
1	ORIGINAL ISSUE	WMH	AW	28.10.02

**FAB & FIX**  
Unit 4  
The Moorings Business Park  
Exhall, Coventry  
CV6 6RH  
T: 02476 585 785  
F: 02476 585 786  
E: sales@fabnfix.co.uk  
www.fabnfix.co.uk

# Haven 3DL.

## Making Adjustments.

### Compression Adjustment.

1). With the door in the closed position, remove both the top and bottom end cover caps by applying pressure to the rear surface as shown. The front of the end cap should rise. You may need to gently prise them loose to remove them.

( Please note : This method of removing the cover caps was a later modification and therefore may not apply. Depending on the date of when hinges were fitted, you may find that the cap itself contains small cut-outs to assist in removal ).

2). Open the door so that you can easily see the reverse of the hinge. Using a 2mm allen key loosen off the security grub screw slightly to allow the compression pin to move freely See A. Once done re-close the door.

3). Place a 3mm allen key into the compression pin and hold in place whilst at the same time tapping the pin from underneath in the direction of the arrow. Raise the pin a maximum of 10mm to enable you to adjust it.

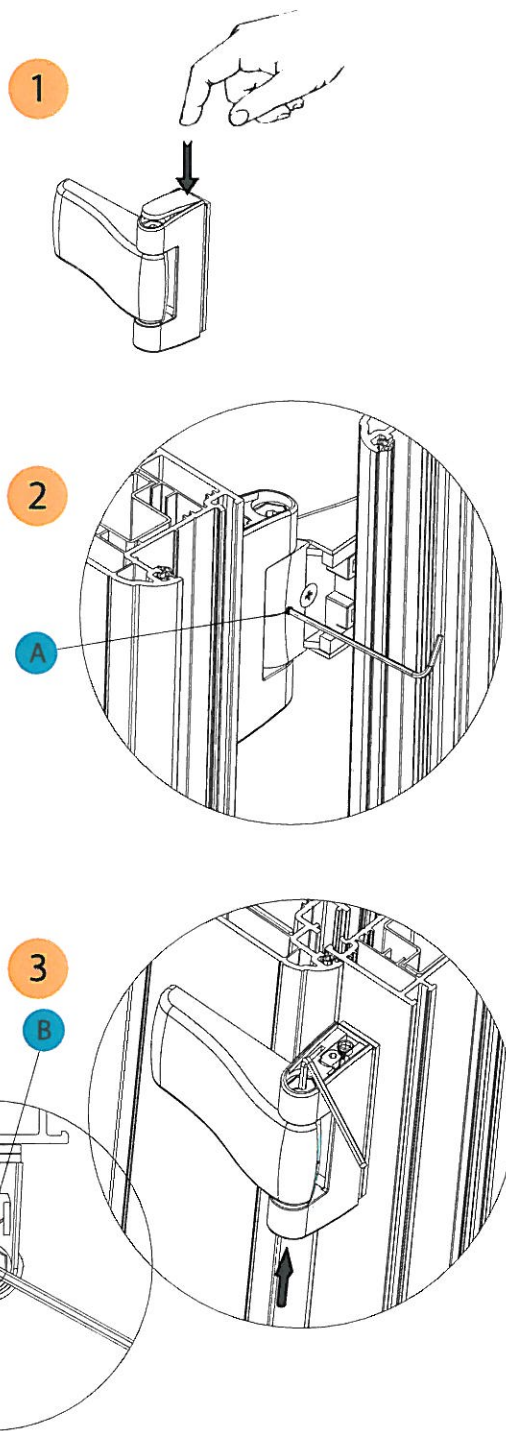
Please note that the recommended neutral setting for compression is to set the hinge pin mark facing to 7-o'clock.

Adjustment mark set at 7-o'clock.

4). Once the correct compression setting is set perform the above actions in reverse. Note that the end caps will not fit into place unless the hinge is in the locked position.

Things to check :

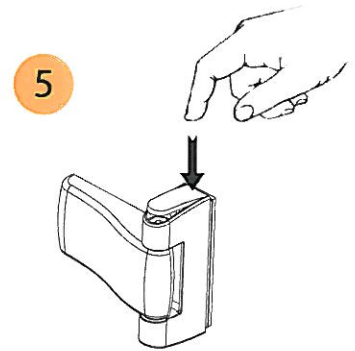
- A). Adjustment pin is located fully into the socket and the Security Grub Screw is tightened See A.
- B). Ensure that the hinge is in the Locked position, identified by the position of the cam pin See B.



# Haven 3DL. Making Adjustments.

## Height Adjustment.

5). With the door in the closed position, remove the top end cover cap by applying pressure to the rear surface as shown. The front of the end cap should rise. You may need to gently prise it loose to remove it.

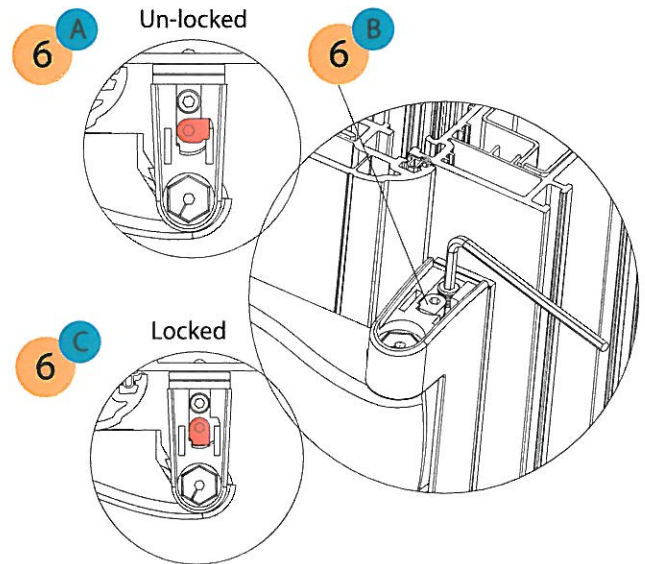


6). NOTE: The Locking Cam should be turned into the Un-locked position before making height adjustments.

A). Using a 3mm allen key turn the locking cam into the open position by turning it anti-clockwise. See fig 6A.

B). The height adjustment screw requires a 3mm allen key. Turn the grub screw clockwise to raise the height of the hinge. Turn the grub screw anti-clockwise to lower the height of the hinge. See fig 6B.

C). With the correct height adjustment set, re lock the locking cam by adjusting back to the Locked position See fig 6C. Replace the end cover cap (step 5). Note that the end cap will not fit into place unless the hinge locking cam is in the locked position.



## Horizontal Adjustment.

7). Open the door to reveal the reverse of the hinge. Holding the cover cap in place, remove the cover cap screw with a posi-screwdriver. The cap should now come away easily allowing you access to the horizontal adjustments.

8a). With the main cover cap removed, loosen off the sash adjustment screw using a 3mm allen key. This releases the fixed sash piece and allows for easier horizontal adjustment.

8b). Using a 4mm allen key, horizontal adjustment can be achieved by adjusting the screw at the front of the sash piece. Turning the adjustment screw clockwise or towards you, adjusts the door away towards the lock side. Turning the adjustment screw anti-clockwise or away from you adjusts the door towards the hinge side.

8c). Once correct horizontal settings are achieved, return to step 8a and re-lock the sash piece by tightening the sash adjustment screw. Re-fit the main cover cap & screw, step 7 to complete the adjustments.

